



MEMBERSHIP

PROGRAM

Lion Membership

- **Free registration**
- **7% of commission on sales**

This Membership is our Covid-19 Active Response.

Because of the lockdown and the pandemic we want to give the opportunity to each new partner, to use our business model without any initial cost.

You'll be able to upload up to 7 products, sell and promote your company and your marketplace.

At every time you can upgrade your membership with a more functional plan.

Heart of Africa Expedition will charge 7% of commission on your sales.



Cheetah Membership

- **Free registration**
- **15% of commission on sales**

A 3 months Membership, that gives you all the premier features of the Buffalo Membership without subscription fee.

Highlights:

- Personal Dashboard
- Personal marketplace
- 15% of commissions on your direct Sales
- 20 uploads of products in your marketplace
- 5 products can be set as Featured



Crocodile Membership

The best choice if you want to start your business with low budget.

Just pay 1\$ when you enter and you use your dashboard. Upload up to 7 itineraries and start get online reservations. Once you set up your marketplace, all the settings will be maintained up to 3 months without any login. Pay and connect only to check if you got enquiries and reservations. We want you to grow up with us, and leave nobody behind.

Highlights:

- Free registration
- 1\$ for 3 months
- No commission on sales

- Pay when you use it
- Free Storage of your setting and products
- Personal Dashboard
- Personal marketplace
- 0% of commissions on your direct Sales
- 7 uploads of products in your marketplace

Buffalo Membership

- **Free registration**
- **25\$ per month**
- **No commission on sales**

This membership package is a monthly payment subscription, that allows you to access to all the essential features the platform offers to start manage your business and grow up.

Highlights:

- Personal Dashboard
- Personal marketplace
- 0% of commissions on your direct Sales
- 20 uploads of products in your marketplace
- 5 products can be set as Featured



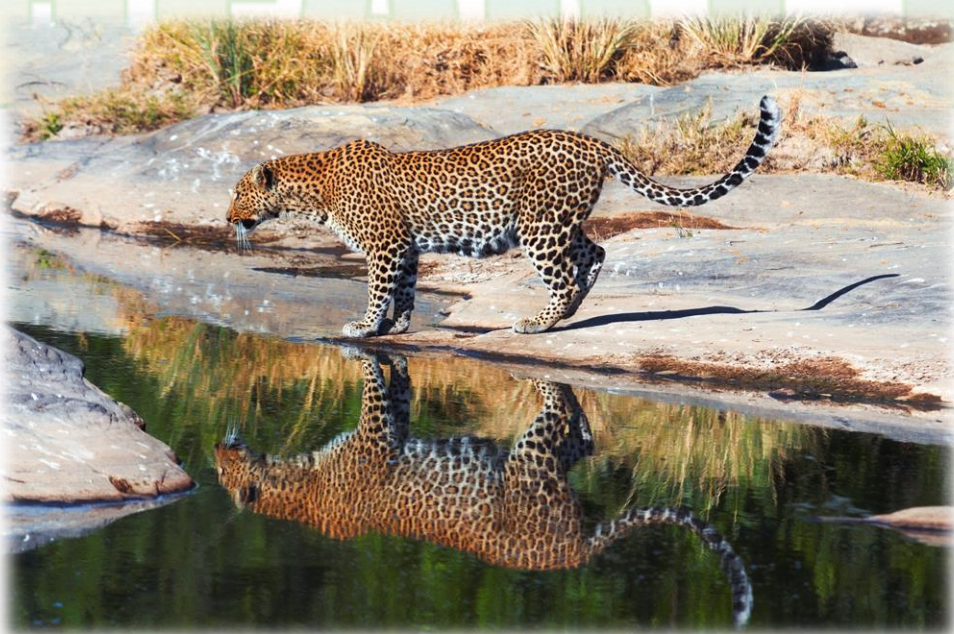
Leopard Membership

- **Free registration**
- **100\$ for 6 months**
- **No commission on sales**

The Leopard membership is a 6 month subscription that allow your account to use most of the features of the platform.

Highlights:

- Personal Dashboard
- Personal marketplace
- 0% of commissions on your direct Sales
- 50 uploads of products in your marketplace
- 10 products can be set as Featured



Elephant Membership

- **Free registration**
- **180\$ for 1 year**
- **No commission on sales**

The Elephant membership is a subscription for 1 year that allow your account to use all the features of the platform and will give you immediate free access to all the new updates of Heart of Africa Expedition.

Highlights:

- Personal Dashboard
- Personal marketplace
- 0% of commissions on your direct Sales for 1 Year
- 75 uploads of products in your marketplace
- 25 products can be set as Featured



Rhino Membership

- **Free registration**
- **300\$ for 2 years**
- **No commission on sales**

Be a Rhino Member and get all the advantages of unlimited use of all the features of Heart of Africa Expedition and get immediate free access to all the future updates.

Highlights:

- Personal Dashboard
- Personal marketplace
- 0% of commissions on your direct Sales for 2 Years
- 100 uploads of products in your marketplace
- 50 products can be set as Featured

